

Loma Pelona Center

The Loma Pelona Center is a multipurpose facility located on the west side of the main campus near Manzanita Village. The 8000-square-foot layout includes two auditorium style rooms with sliding partitions, a recreation room, and restrooms. An outdoor patio offers spectacular views of the campus lagoon.



Room Capacities & Rates

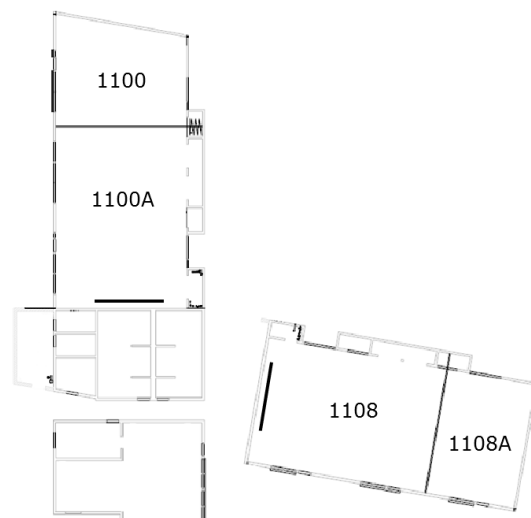
Room	Capacity				Rates (Off-campus / On-campus)				
	Maximum	Lecture	Classroom	Banquet	up to 2 hrs	up to 4 hrs	Additional hrs	*Labor	**Labor
1108 -Entire Space + Patio	148	148	93	148	n/a	\$335/\$150	\$90/hr; \$35/hr	\$50	\$20/hr
1108A	49	38	24	48	\$80/\$35	\$115/\$55	\$20/hr; \$15/hr	\$50	\$20/hr
1108	99	72	45	98	\$80/\$35	\$115/\$55	\$20/hr; \$15/hr	\$50	\$20/hr
1100 -Entire Space	140	140	90	140	n/a	\$335/\$150	\$90/hr; \$35/hr	\$50	\$20/hr
1100A	103	77	48	100	\$80/\$35	\$115/\$55	\$20/hr; \$15/hr	\$50	\$20/hr
1100	Soft Furniture for 18				\$80/\$35	\$115/\$55	\$20/hr; \$15/hr	\$50	\$20/hr

*Labor charge: if setup required differs from the standard room setup

**Labor A/V: Any "back & forth" media needs (e.g., switching between the data projector and the DVD player or using multiple laptops) require onsite audiovisual labor.

Standard Room Setup

Room	Seating	Displays	Sound
1108 -Entire Space	Lecture Style for 91	159" screen + (4) 52" & (2) 42" HDTV LCD displays	Surround Sound
1108A	Hollow Square for 20	(2) 52" HDTV LCD displays	Stereo Sound
1108	Lecture Style for 67	159" screen + (2) 52" & (2) 42" HDTV LCD displays	Surround Sound
1100 -Entire Space	Lecture Style for 75 & Soft furniture for 18	159" screen + (4) 52" & (2) 42" HDTV LCD displays	Surround Sound
1100A	Lecture Style for 55 & Hollow Square for 20	159" screen + (2) 52" & (2) 42" HDTV LCD displays	Surround Sound
1100	Soft furniture for 18	(1) 52" HDTV LCD display	Stereo Sound



Media Equipment

The following audio-visual equipment is available in each Loma Pelona multi-purpose room:

Equipment

- Microphones: (1) Wired on podium and (1) Wireless (handheld or lavelier/lapel)
- Laptop connection to monitors and projector for video and sound
- Blu-Ray/DVD Player
- Cable Television
- 3.5mm input (headphone jack) for MP3 player and iPod connection
- Speaker Phone

Monitors

- 1 x Projector screen with 159" screen equivalent in the front of the room
- 2 x 42" monitors in the front of the room
- 2 x 52" monitors in the middle of the room
- 2 x 52" monitors in the back of the room

Outdoor Speakers

- Capable of outputting sound from:
- Podium
- MP3 player or iPod
- Auxiliary source connected through
- 3.5mm jack (headphone jack)

Media Equipment & Furniture Rates

Equipment/Furniture	Room	Rates
PA System (with own equipment & sound only)	All Spaces	No charge
Video media (LCD displays; Blu-Ray/DVD Player; Data projector)	1108 & 1100A; Entire Spaces 1108A & 1100	\$100/day \$50/day
Video media & laptop (LCD displays; Blu-Ray/DVD Player; Data projector)	1108 & 1100A; Entire Spaces 1108A & 1100	\$160/day \$110/day
Speaker Phone (Long Distance calling charges not included)	All Spaces	\$25/day
Speaker Phone + video media (Long Distance calling charges not included)	All Spaces	\$100/day
Round Tables - 66" (Up to 10 available)	All Spaces	\$6/table
Classroom Tables - 6' x 18" (up to 48 available)	All Spaces	\$6/table

Walking Times

Beach	4 minutes
University Center	6 minutes
Carrillo Dining Commons	1 minute
Parking Structure 22	5 minutes
Bus Circle	12 minutes

Reservations

Call (805) 893-3072 or email reservations@housing.ucsb.edu for bookings and inquiries. Reservations must be made at least five business days prior to the event.

